

CCX™ 5.4

X-ray screening of large hand-carried baggage and parcels with an ultra-compact footprint



CCX™ 5.4 delivers optimal versatility for accurate threat detection in baggage, parcels and mail. CCX™ 5.4's large inspection chamber and compact footprint enables larger objects to be screened by a single operator whilst preserving valuable floor space.

Powerful X-Vision™ software in each CCX™ 5.4 produces superior imaging results and threat detection with an intuitive user-interface and a comprehensive suite of image analysis functions.

Analysed Images' range of compact, movable cabinet X-ray systems deliver reliability and ease-of-use in an attractive, ultra-compact and ergonomic package. CCX™ systems are full-protection cabinet systems that can be operated in a wide range of applications and environments by a single, non dedicated user.

FEATURES

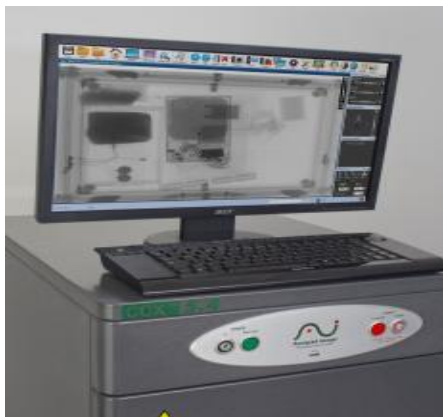
- Ultra-compact footprint
- Easy to use
- Network Ready
- Windows 10 operating system
- X-Vision™ software
- Full-protection X-ray chamber
- Quick, single-person operation
- Quick relocation within minutes
- Threat Image Projection (TIP)
- Region of Interest Inspection



APPLICATIONS

- Weapons & Contraband Detection
- Executive Mail
- Postal / Mailrooms
- Special Delivery Parcels
- Hand-carried baggage
- Theft Prevention
- Goods Delivery
- Public Reception Areas

Flexible interface location



Intuitive, user friendly interface



Soft edge styling & finish



GENERAL SPECIFICATIONS

| | |
|--------------------------------------|---|
| Imaging area (max object size) | 449 mm (W) x 569 mm (D) |
| Max object load (evenly distributed) | 100kg (low energy) 164kg (multi-energy) |
| Power requirements | 230 VAC +-10%, 50-60 Hz/110 VAC +-10%, 50-60 Hz |
| Construction | Steel with lead lining for radiation protection |
| Standard colour and finish | Heavy duty satin interpon 610 boron (custom finishes available) |

X-RAY GENERATOR

| | |
|--------------------------------|---|
| Nominal anode voltage | 90kV. Optional 60kV to 160kV on multi-energy systems. |
| Nominal anode current | 1.2mA – 5.0mA |
| Cooling | Hermetically sealed oil bath |
| Beam orientation and direction | Vertically downward beam |

IMAGING AND PERFORMANCE

PC Characteristics

| | |
|--------------------|---|
| Operating system | Microsoft Windows™ 10 |
| Imaging software | X-Vision™ (separate data sheet available) |
| Computer processor | Intel™ Quad-Core Hyper-threading (or higher) |
| Memory and storage | 4GB RAM, 120Gb SSD, dual USB ports. Optional HDD. |

Imaging Characteristics

| | |
|-----------------------------|--|
| Image capture resolution | 1.2 megapixels. Optional 2 megapixels and 5 megapixels. |
| Contrast sensitivity | 65,535 grey levels |
| Image display | 22" TFT flat panel. Optional 19" integrated touch-screen. |
| Resolution (wire detection) | 40-44 AWG |
| Penetration (steel) | Single energy 3mm. Dual energy 16mm. |
| Image enhancement tools | Full suite of enhancement tools available. Refer X-Vision™ technical data sheet. |
| Materials discrimination | Tri-materials discrimination available on multi-energy systems. |

Image Storage

| | |
|--------------------------|---|
| Image archiving capacity | Storage (>100,000 images) on PC memory. Additional storage via USB flash drive. |
| Image storage formats | TIFF (16 bit and 8 bit), JPEG, BMP and other formats. |

Network capability

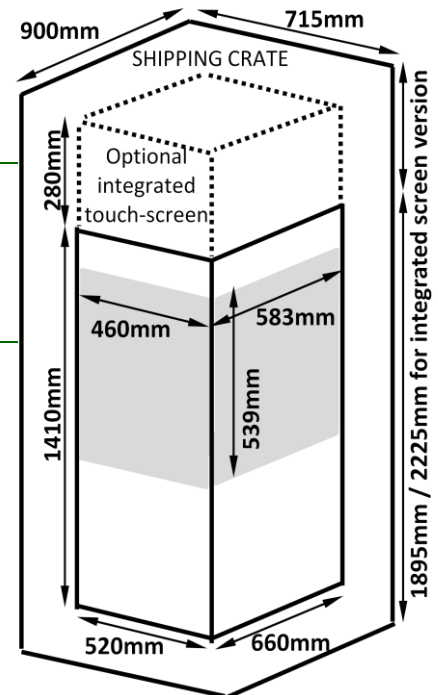
| | |
|--------------------|--|
| Network capability | Gigabit Ethernet. Optional 802.11g/n. |
| Network security | Multiple users, multiple authority levels & secure logon |
| Database security | System database located on protected drive |

DIMENSIONS & WEIGHTS

| | |
|--------------------------------|---------------------------------------|
| System Dimensions | 520 mm (W) x 660 mm (D) x 1410 mm (H) |
| Inspection chamber dimensions | 460 mm (W) x 583 mm (D) x 539 mm (H) |
| Weight - Single energy systems | 160 kg (net) 227 kg (gross shipping) |
| Weight - Multi-energy systems | 195 kg (net) 270 kg (gross shipping) |

ENVIRONMENTAL

| | |
|-----------------------|--------------------------|
| Operating temperature | -5° to +40°C |
| Storage temperature | -10 to +50°C |
| Humidity | 0% to 96% non-condensing |
| Airborne noise level | < 30db (A) |
| Power usage | 135w standby, 530w X-ray |



Specifications are current at the time of first publication and are subject to change to ensure continuing product enhancement. Analysed Images CCX™ systems comply with applicable international health and safety regulations and are certified to be in full compliance with all radiation safety requirements and external emissions limits specified in the United States Code of Federal Regulations (21CFR 1020.40) and United Kingdom Ionising Radiations Regulations 1999 (harmonised with EC Directive 96 / 29 Euratom).