

## ULTRA - HIGH RESOLUTION PORTABLE X-RAY IMAGING IN AN INSTANT

The ultraSCAN™ range of compact portable X-ray systems delivers ultra-high quality X-ray images from a thin digital panel within seconds of the operator's first approach to the suspect object.

ultraSCAN™ is simple and easy to operate, is rapidly deployable and remotely controlled for safe operator inspection.

The complete ultraSCAN™ solution is highly configurable to suit a range of user applications.

Your tailored ultraSCAN™ solution comprises a choice of:

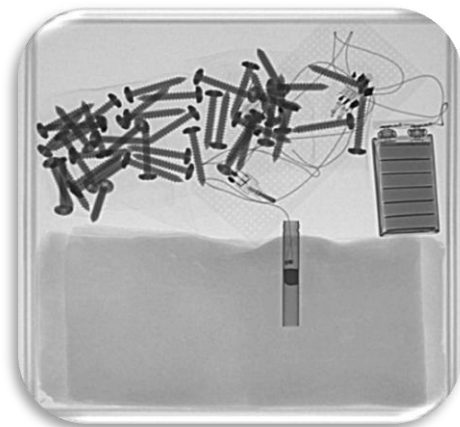
- ultraSCAN™ detector panel - varying sizes
- portable X-ray source - pulsed and/or continuous
- X-Vision™ software - notebook, tablet and/or pc
- communication module - wired and/or wireless
- portable carry-case options
- accessories to suit your application

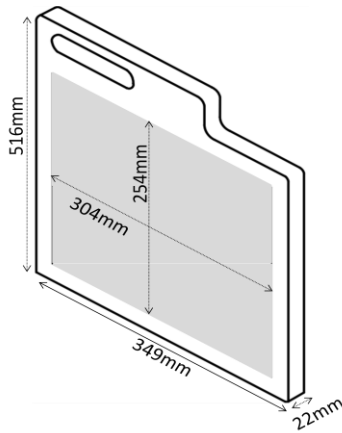


## APPLICATIONS

ultraSCAN's™ superior functionality and configurable features suit a variety of applications, including:

C-IED • FIRST RESPONDER INSPECTION • CUSTOMS & BORDER CONTROLS • SECURITY INSPECTIONS • SEARCH OPERATIONS • WALL INSPECTIONS • SUSPICIOUS BAGGAGE CHECKS • EXPLOSIVES DETECTION • WEAPONS DETECTION • SITE INSPECTIONS • NDT

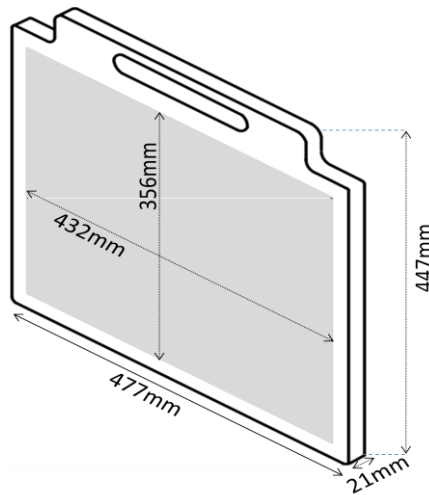




### ultraSCAN™ 3025

Pixels: 7.7mln (3036 x 2540)

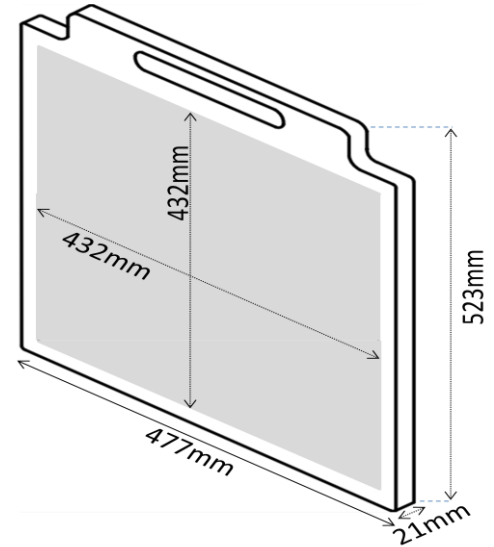
Weight: 2.4kg



### ultraSCAN™ 4336

Pixels: 15.3mln (3556 x 4320)

Weight: 5.1kg



### ultraSCAN™ 4343

Pixels: 18.6mln (4320 x 4320)

Weight: 6.0kg

## SUMMARY OF ultraSCAN™ PERFORMANCE

### General

Imaging category	Direct radiography
Detector type	a-Si digital detector array
Image scan time	2 seconds

### Imaging Resolution

Dynamic range	16 bit
Pixel pitch	100µm (0.1mm)

### Near-edge imaging

Non-active area	22mm on 3 sides
-----------------	-----------------

### Software

Operating system	Windows™ 8.1 Pro x64
Image processing	X-Vision™

### Imaging Station

Integrated with a variety of notebooks/tablets, including touch-screen

### Battery Life

Continuous use	> 4 hours from full charge
Standby	> 20 hours from full charge
Unit off	> 15 days from full charge

### Environment

Operating temperature	10°C to 35°C
Storage temperature	-10°C to + 55°C / -10°C to 70°C

### Construction

Construction	Carbon fibre, aluminium and acetal
--------------	------------------------------------

### Standards

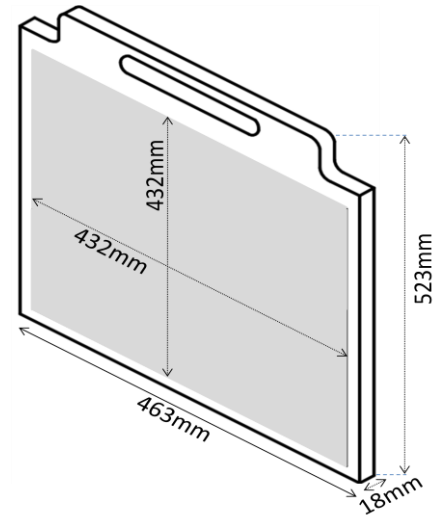
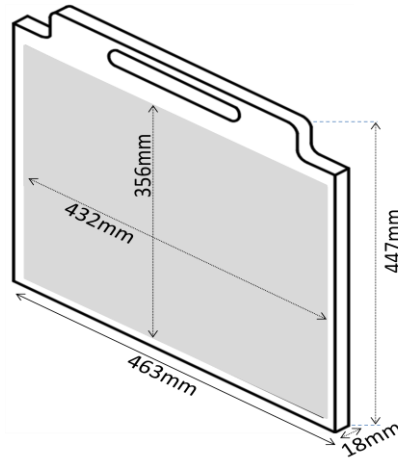
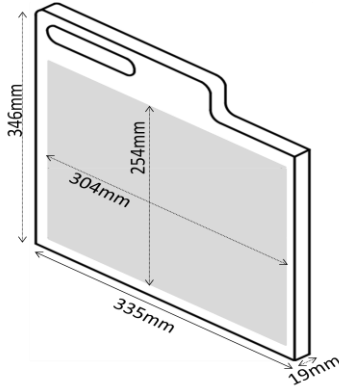
CE	EN60068-2-6/27, EN60529:1991
Ingress Protection	IP42 (EN60529:1991+A1:2000)

### Generator

Integrated with a variety of X-ray sources (pulsed and continuous )

## KEY OPTIONS

- Selection of carry cases incl. backpack
- Wired and wireless communication modules
- Ruggedised notebook / tablet
- Touch-screen notebook / tablet
- Auxiliary power supply (AC & DC power)
- Vehicle power pack
- Remote trigger
- Protective sleeve
- Combined data & power cable
- Clamp stand
- Dual energy module for materials discrimination
- Automatic defect recognition software



## ultraSCAN™ 3025L

Pixels: 7.7mIn (3036 x 2540)

Weight: 2.2kg

## ultraSCAN™ 4336L

Pixels: 15.3mIn (3556 x 4320)

Weight: 4.9kg

## ultraSCAN™ 4343L

Pixels: 18.6mIn (4320 x 4320)

Weight: 5.7kg

## SUMMARY OF ultraSCAN™ (L) PERFORMANCE

### General

Imaging category	Direct radiography
Detector type	a-Si digital detector array
Image scan time	2 seconds

### Imaging Resolution

Dynamic range	16 bit
Pixel pitch	100µm (0.1mm)

### Near-edge imaging

Non-active area	15.5mm on 3 sides (ea)
-----------------	------------------------

### Software

Operating system	Windows™ 8.1 Pro x64
Image processing	X-Vision™

### Imaging Station

Integrated with a variety of notebooks/tablets, including touch-screen

### Battery Life

Continuous use	> 4 hours from full charge
Standby	> 20 hours from full charge
Unit off	> 15 days from full charge

### Environment

Operating temperature	10°C to 35°C
Storage temperature	-10°C to + 55°C / -10°C to 70°C

### Construction

Construction	Carbon fibre, aluminium and acetal
--------------	------------------------------------

### Standards

CE	EN60068-2-6/27, EN60529:1991
Ingress Protection	IP42 (EN60529:1991+A1:2000)

### Generator

Integrated with a variety of X-ray sources (pulsed and continuous )

## KEY OPTIONS

- Selection of carry cases incl. backpack
- Wired and wireless communication modules
- Ruggedised notebook / tablet
- Touch-screen notebook / tablet
- Auxiliary power supply (AC & DC power)
- Vehicle power pack
- Remote trigger
- Protective sleeve
- Combined data & power cable
- Clamp stand
- Dual energy module for materials discrimination
- Automatic defect recognition software